

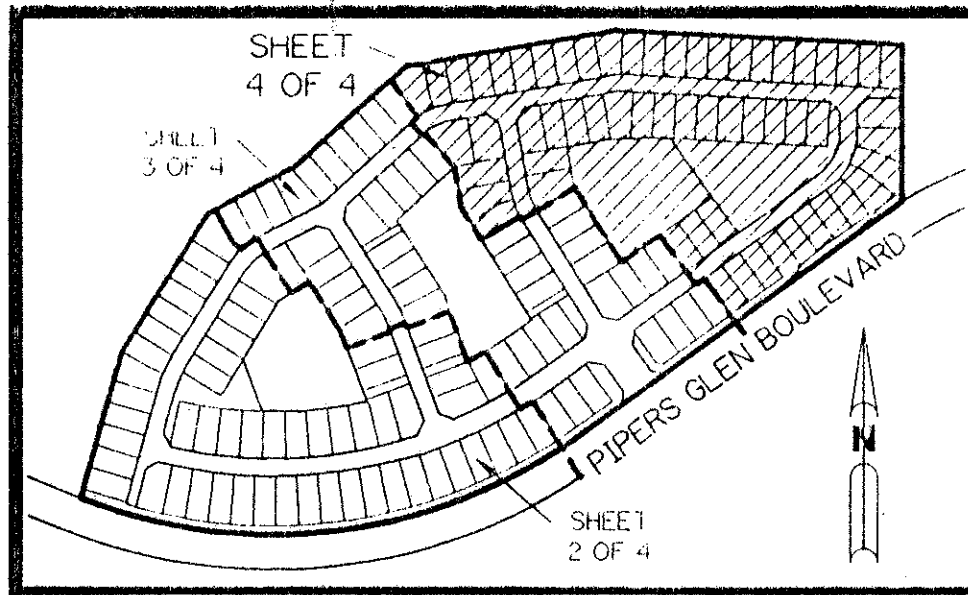
A PLANNED UNIT DEVELOPMENT

# PIPERS GLEN - PARCEL "E"

BEING A PARCEL OF LAND LYING IN SECTIONS 3 AND 4, TOWNSHIP 46 SOUTH, RANGE 42 EAST, AND A PORTION OF TRACTS 1, 31, AND 32 OF BLOCK 64 OF PALM BEACH FARMS COMPANY PLAT NO. 3, AS RECORDED IN PLAT BOOK 2, PAGES 45 THROUGH 54, INCLUSIVE, AND THAT RIGHT-OF-WAY ABANDONED ACCORDING TO OFFICIAL RECORD BOOK 3566, PAGE 1728, OF THE PUBLIC RECORDS OF PALM BEACH COUNTY, FLORIDA.

SHEET 4 OF 4 MARCH, 1995

*PET. 80-212D  
ALDC. #0003  
5/3/91 K*

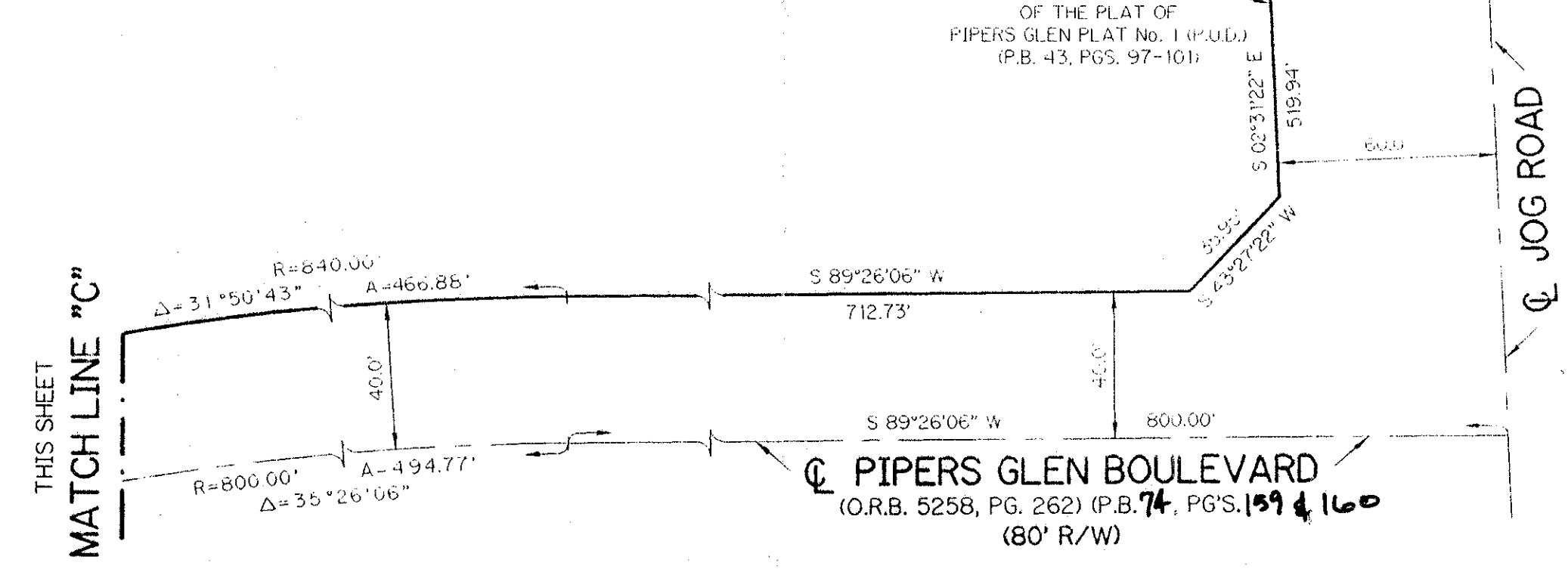


KEY MAP  
N.T.S.



SUBDIVISION \* Pipers Glen Parcel E  
BOOK 75 PAGE 58  
FLOOD ZONE B FLOOD DIST #200A  
QUAD # 36, S1 ZONING RT  
SE 80-212 ZIP CODE 33437  
PUD NAME 34/46/42

DETAIL "A"  
SCALE: 1" = 40'



- LEGEND:
- PERMANENT REFERENCE MONUMENT, P.L.S. 4-213
  - ▲ PERMANENT CONTROL POINT, P.L.S. 4-215
  - Δ DELTA ANGLE
  - ⤵ ARC LENGTH
  - BE BUFFER EASEMENT
  - DE DRAINAGE EASEMENT
  - L.M.A.E. LAKE MAINTENANCE EASEMENT
  - L.M.E. LAKE MAINTENANCE EASEMENT
  - L.W.D.D. LAKE WORTH DRAINAGE DISTRICT
  - NR NOT RADIAL
  - NTS. NOT TO SCALE
  - No. NUMBER
  - O.E. OVERHANG EASEMENT
  - O.R.B. OFFICIAL RECORD BOOK
  - P.B. PLAT BOOK
  - POS. PAGES
  - P.L.S. PROFESSIONAL LAND SURVEYOR
  - R. RADIUS
  - R/W RIGHT-OF-WAY
  - S.T. SURVEY TIE
  - U.E. UTILITY EASEMENT

THIS INSTRUMENT PREPARED BY  
PERRY C. WHITE, P.L.S., 4213 STATE OF FLORIDA  
LAWSON, NOBLE AND ASSOCIATES, INC.  
ENGINEERS PLANNERS SURVEYORS  
WEST PALM BEACH, FLORIDA

0298-013

PIPERS GLEN-PARCEL "E"